



Limitorque-MX and QX Profibus DP w/ Redcom & DTM Software

An unmatched combination of true redundancy and quick switchover elapsed times of less than 500ms makes Profibus the preferred network protocol solution. Required to be in compliance with EN50170 Fieldbus Standard for RS-485 communications, Profibus DP field units are one of the most frequently used network protocols in industry applications.

Flowserve Limitorque Profibus DP with Redundancy not only meets the standard PB specification but exceeds it with additional compliance to NAMUR NE-107 that provides users with industry accepted icons for easy classification of pertinent network alarms. The Profibus DP with Redundancy is designed to be compatible with simpler - flying redundancy, and more sophisticated - system redundancy networks. The true network DP board allows users to experience redundant switch over times and eliminates risk of losing device specific network communications.

In network loops that require fast communication speeds and in-depth diagnostics, the Profibus DP with Redundancy provides the flexibility of choosing from a number of baud rates (9.6k up to 1.5m) for improved process optimization. Additionally, the new and improved DTM allows for customization and conveyance of several cyclic variables.

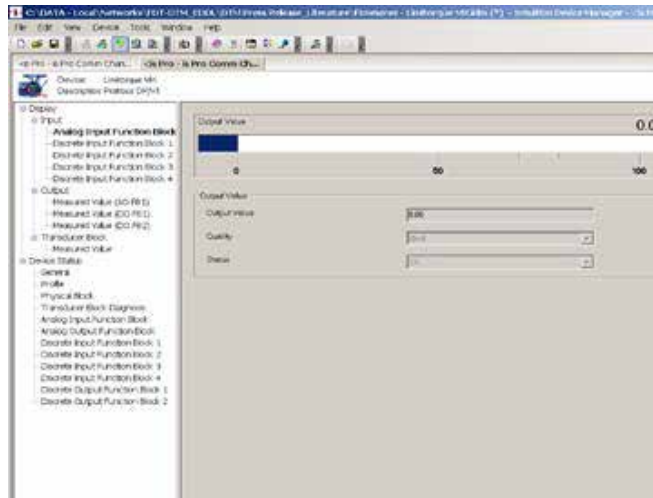
Key features of the Profibus DP Redcom include:

- Master-to-slave communication
- Standby communication channel
- Analog and digital input and output, set points, relay control, position, and torque
- Power ON / Reset – power on / reset of master or slave
- Parameterization – download of parameters into field device (selected during configuration by user)
- I/O Configuration – download of I/O configuration into the field device (selected during configuration by the user)
- Real-time clock stamped faults
- Software controlled on board termination (no external resistor termination required)
- Wireless software upgrades
- Data Exchange – cyclic data exchange (I/O Data) and field device reports diagnostics
- Improved Flowserve Valvesight DTM compatibility
- EDDL and GSD available





FDT technology is independent from any specific communication protocol, device software or host system, allowing any device to be accessed from any DCS host through any protocol.



Flowserve Corporation
 Limatorque Actuation Systems
 5114 Woodall Road
 Lynchburg, VA 24506 USA
 Telephone: 434-528-4400
 Fax: 434-845-9736

Effortlessly compatible.

The Profibus DP-V1 DTM V 2.0 is a software component that contains device specific application information. The DTM can be integrated into engineering and FDT frame applications, such as stand-alone commissioning tools or asset management systems that are equipped with FDT interfaces. FDT technology is independent from any specific communication protocol, device software or host system, allowing any device to be accessed from any DCS host through any protocol.



Less effort. More savings.

Typically, commissioning of a new valve or device can take hours and has to be performed at the actual device. Flowserve's Profibus DTM gives users options for quick commissioning—in as little as 20 minutes per device—and unheard-of flexibility. Once the limits are set, the device can be set up locally or remotely through a network using the user-friendly graphical interface and intuitive software.



Cost savings also result from not having to purchase laptops or special software tools to configure the actuators. Each instrument can be configured from the DCS host by opening the DTM from inside the FDT frame application.

Easy to use.

From the moment you experience the system, you'll appreciate how intuitive it is.

- Easy to install
- Easy to read
- Easy to understand

The Limatorque MX and QX DTM is certified by the FDT Group per specification 1.2, and a free download is now available at www.limatorque.com.