



*Flowserve – Anchor Darling  
Pump Turbine Exhaust Check Valves*

# Pump Turbine Exhaust Check Valves

## Problem

Damage and failure to pump turbine exhaust check valves.

## Solution

A specially designed Flowserve Anchor/Darling lift check valve that performs successfully during all operating modes.

Boiling Water Reactors utilize turbine-driven pumps in their emergency core cooling systems (ECCS). Steam from the main steam line is used. The turbine steam travels through two block valves and a turbine control valve, and then the steam is exhausted from the turbine to the suppression pool through a check valve and a stop check valve.

The first check valve downstream of the pump turbine is the turbine exhaust check valve. This valve is also used for containment isolation. Both swing check and tilting-disc check valves have been tried in this service. Regardless of the type of valve used—or the manufacturer—the valve presents a constant maintenance problem. There has been severe damage to both the hinges and seating surfaces and, in several instances, discs have separated from the hinge and been found lodged in the downstream piping.

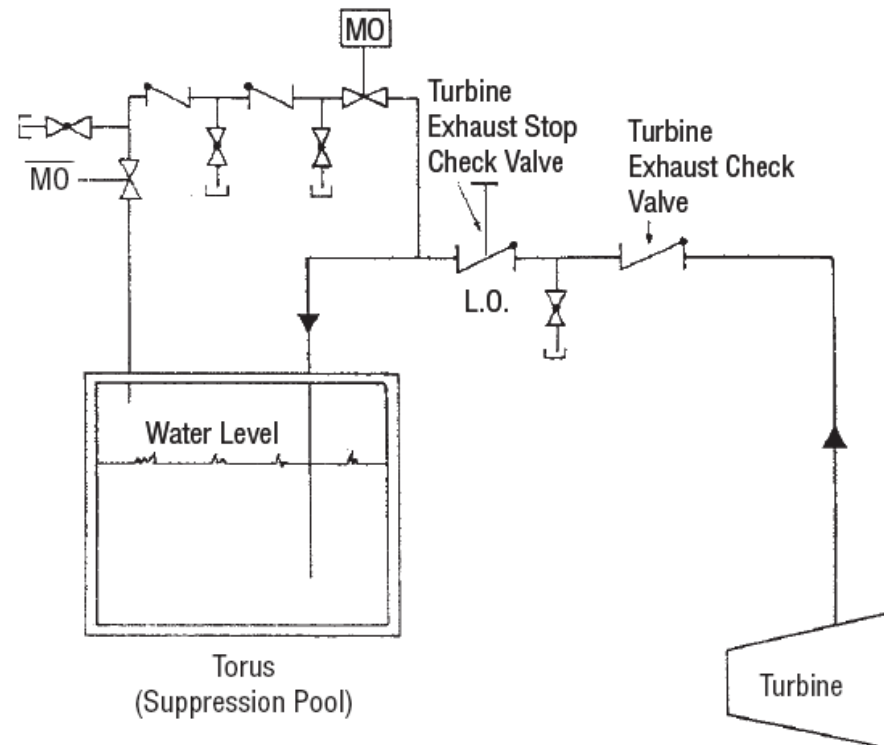
Flowserve Anchor/Darling Valves, having supplied valves for this service, investigated the operating conditions to determine the cause and possible resolution. Our discussions with both system operations and plant maintenance personnel revealed that

the damage is the result of two separate operating modes not identified in the original valve specification:

1. One form of periodic testing of the system is to subject the pump turbine to a fast start. The quick opening of the throttle valve causes the disc on the turbine exhaust check valve to slam into the full open position. The repeated impact of the disc against the body puts a strain on the hinge assembly and leads to eventual hinge failure.

2. In a second form of periodic testing the pump turbine throttle is partially opened. Since the turbine exhaust check valves must be sized for full flow, operation at low flow causes the disc to flutter on the seat. This repeated action causes cracking in both the disc and seat ring seating surfaces. As a result, the valve is unable to pass the Local Leak Rate Tests (LLRT) required for containment isolation valves.

*Turbine Exhaust Check Valve Location*

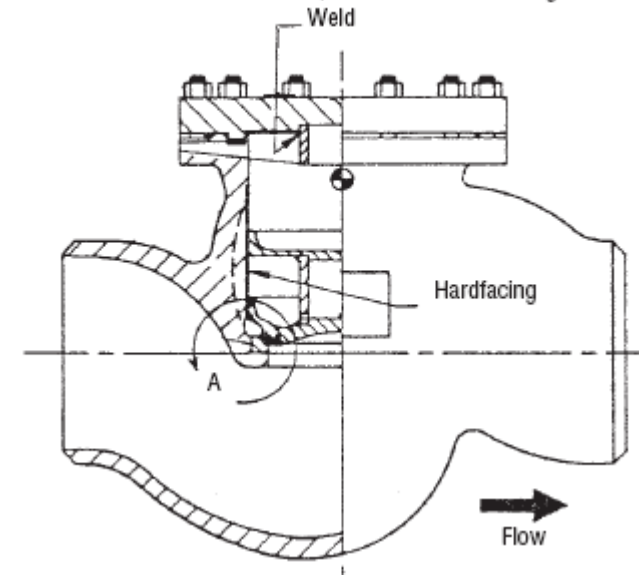


# Pump Turbine Exhaust Check Valves

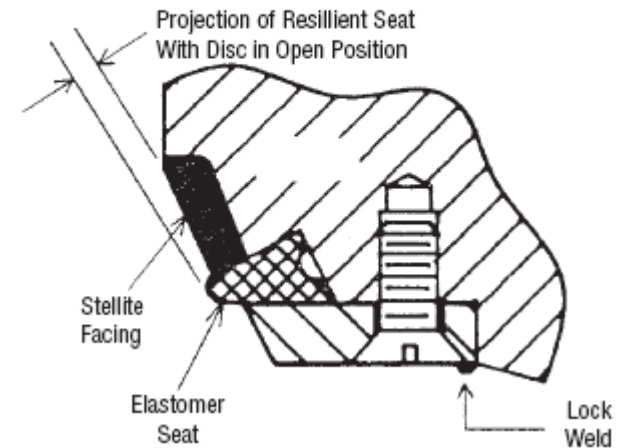
Using this information, Flowserve Anchor/Darling Valves engineering determined that the best value design for the service is a specially designed lift check valve. The basic lift check design was selected because of its inherent damping action in the opening position. The area over the plug as it is raised into the body neck acts as a dashpot, in effect snubbing the opening motion of the disc. Because of concerns about turbine back pressure, a specially configured lightweight disc was incorporated. Finally, in order to assure seat integrity during LLTR, a dual-seat design was incorporated in the disc. It consists of a primary seat of Stellite for a normal service and a secondary seat made of a radiation-resistant polymer. This secondary seat (originally proven in BWR feedwater isolation check service) assures a tight seal under the stringent low-pressure air testing requirements of Appendix J10CFR50.

Solving this turbine exhaust check valve problem is another example of Anchor/Darling's continuing commitment to provide equipment which functions as required to meet the actual service conditions found in operating nuclear power plants.

*Turbine Exhaust Check Valve, With Dual-Seat Design*



*Detail A*





Flowserve Corporation has established industry leadership in the design and manufacture of its products. When properly selected, this Flowserve product is designed to perform its intended function safely during its useful life. However, the purchaser or user of Flowserve products should be aware that Flowserve products might be used in numerous applications under a wide variety of industrial service conditions. Although Flowserve can (and often does) provide general guidelines, it cannot provide specific data and warnings for all possible applications. The purchaser/user must therefore assume the ultimate responsibility for the proper sizing, selection, installation, operation and maintenance of Flowserve products. The purchaser/user should read and understand the Installation Operation Maintenance (IOM) instructions included with the product and train its employees and contractors in the safe use of Flowserve products in connection with the specific application.

While the information and specifications contained in this literature are believed to be accurate, they are supplied for informative purposes only and should not be considered certified or as a guarantee of satisfactory results by reliance thereon. Nothing contained herein is to be construed as a warranty or guarantee, express or implied, regarding any matter with respect to this product. Because Flowserve is continually improving and upgrading its product design, the specifications, dimensions and information contained herein are subject to change without notice. Should any question arise concerning these provisions, the purchaser/user should contact Flowserve Corporation at any one of its world-wide operations or offices.

For more information about Flowserve Corporation, contact [www.Flowserve.com](http://www.Flowserve.com) or call USA 1-800-225-6989

**Flowserve Corporation**  
**Flow Control Division**  
Edward & Anchor/Darling Valves  
1900 South Saunders St  
Raleigh, NC 27603 USA

**Toll – Free Telephone Service**  
(U.S. and Canada)  
Day: 1-800-225-6989

**After Hours Customer Service**  
1-800-543-3927

**U.S. Sales Office**  
Phone: 919-832-0525  
Fax: 919-831-3369

**Website:**  
[www.Flowserve.com](http://www.Flowserve.com)